



Chelmer Road, London, E9

BUTLER & STAG



Large four bedroom townhouse with a private garden in a residential location close to Victoria Park and Hackney Marshes.



- Four bedrooms
- One W.C
- Close to Amenities
- Two Bathrooms
- Modern Interior

Substantial four bedroom townhouse situated in close proximity to the ever changing Chatsworth Road and the bustling Lower Clapton Road. Both high streets offer an abundance of amenities in addition to bus routes Leading directly in to London.

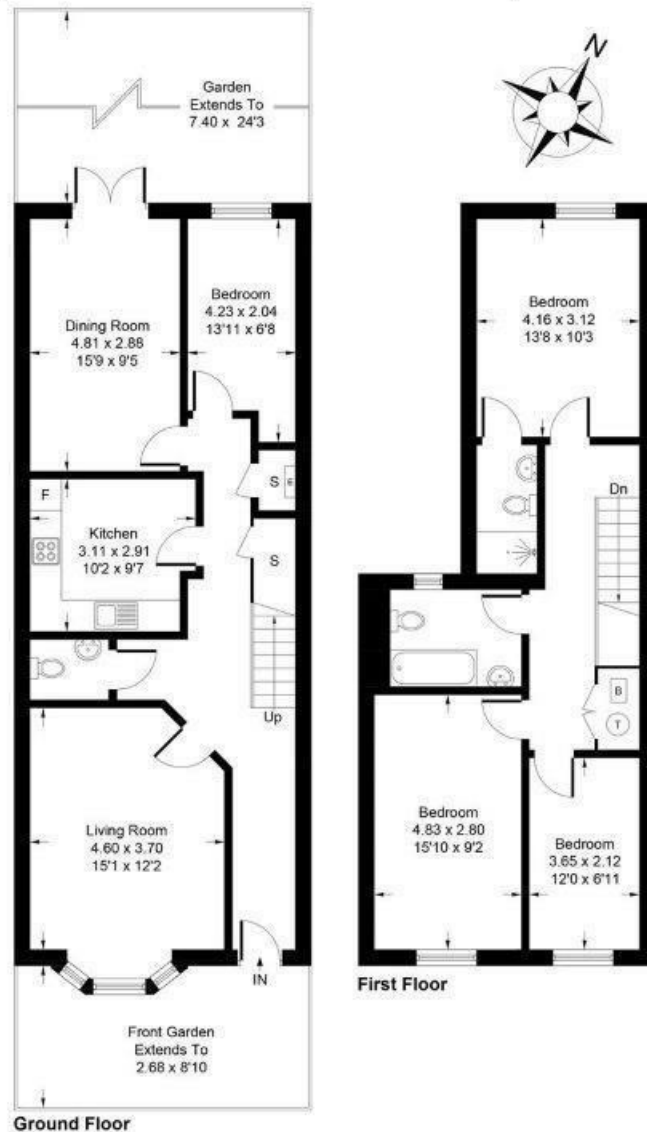
The ground floor comprises of one double bedrooms, a W.C, a spacious dining room with doors leading to a courtyard garden, separate modern fully fitted kitchen a second living area with a bay window and cloakroom. The top floor comprises a further three double bedrooms and shower room.

Chelmer Road is well located close to Hackney Marshes and Victoria Park with quick access to the city via Homerton Station (Overground).





Approximate Gross Internal Area = 127.57 sq m / 1373 sq ft



Whilst every attempt has been made to ensure the accuracy of the floor plan contained here, measurements of doors, windows, rooms and any other items are approximate and no responsibility is taken for any error, omission, or mis-statement. This plan is for illustrative purposes only and should be used as such by any prospective purchaser.

IMPORTANT NOTICE - These particulars have been prepared in good faith and they are not intended to constitute part of an offer or contract. We have not performed a structural survey on this property and the services, appliances and specific fittings have not been tested. All photographs, measurements, floor plans and distances referred to are given as a guide and should not be relied upon.

BUTLER & STAG

☎ 020 8102 1236

🏠 508 Roman Road, Bow, London, E3 5LU

✉ bow@butlerandstag.com

www.butlerandstag.uk